

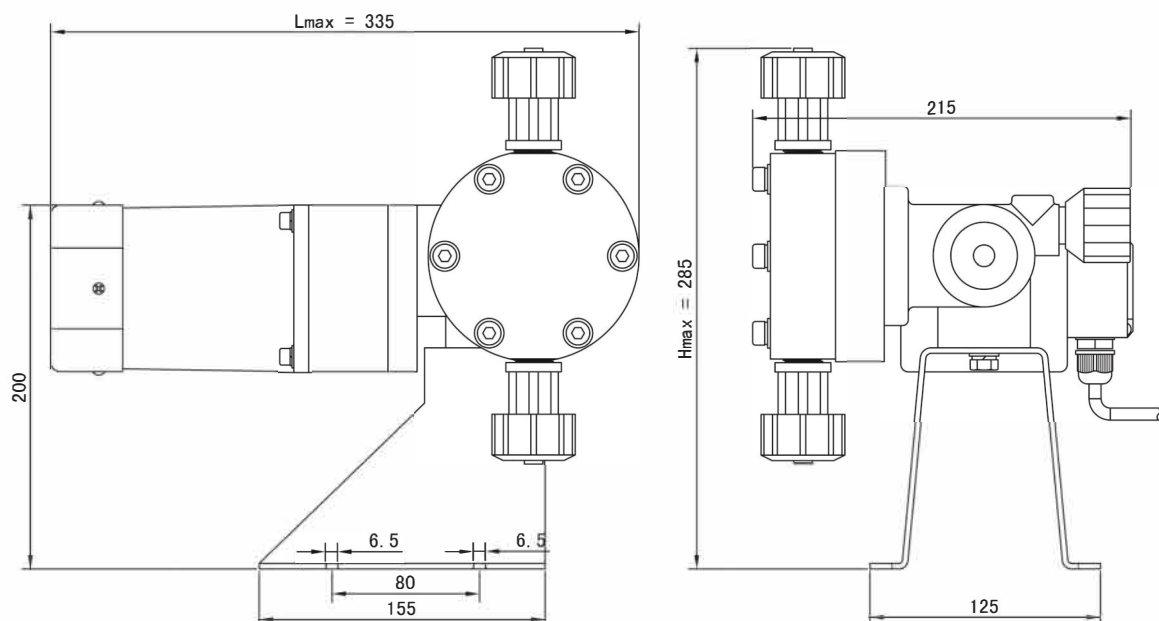
Product Advantages & Characteristics:

- The housing made of precise die casting aluminum and coated with anti-corrosive treatment with a good chemical resistance, strong and high durability.
- The coated laser cut metal base provides more stable and lasting.
- The high-quality bearing produces low noise and higher dosing frequency.

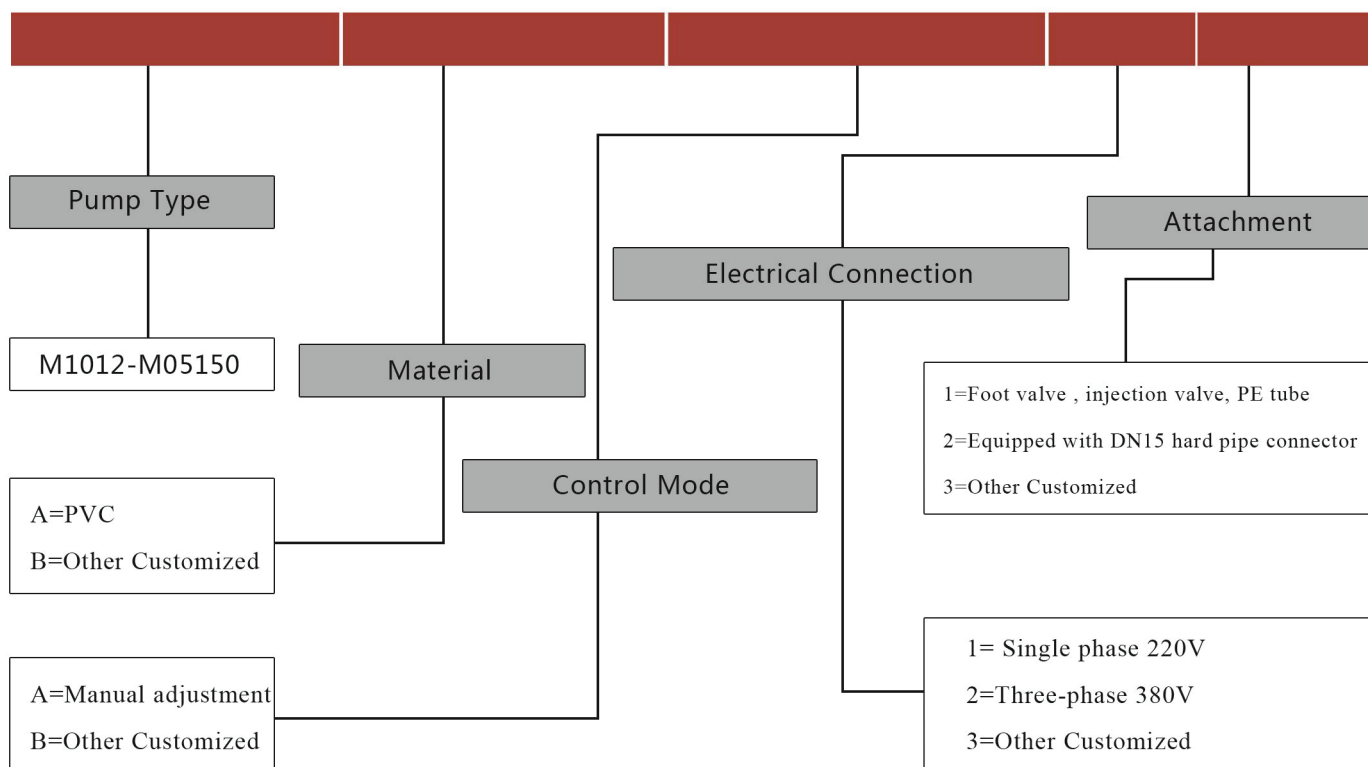


Dimension Drawing

unit: mm



M Series Motor Driven Metering Pump



Technical Data				
Model	Pressure (Bar)	Flow (L/H)	Power (W)	Connection Size
M1012	10	12	40	DN15 Hard tube socket
M1020	10	20	40	DN15 Hard tube socket
M1030	10	30	40	DN15 Hard tube socket
M1040	10	40	40	DN15 Hard tube socket
M0560	5	60	40	DN15 Hard tube socket
M0575	5	75	90	DN15 Hard tube socket
M05100	5	100	90	DN15 Hard tube socket
M05120	5	120	90	DN15 Hard tube socket
M05150	5	150	90	DN15 Hard tube socket

Liquid Ends Material		
Component	Standard	Optional
Pumphead	PVC	SS304
Diaphragm	PTFE	—
Valve body	PVC	SS304
Valve ball	Ceramics	SS304
Valve seat	PTFE	SS304
Valve spring	Hastelloy	—
Seals	FPM	PTFE