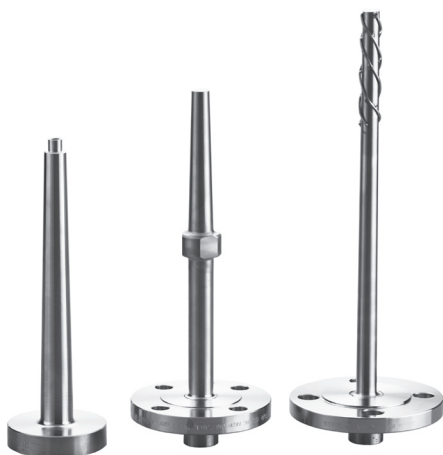


Flanged Type Thermowell

General Description

Flanged type thermowells are precision components manufactured to the highest standard from bar or forgings, to serve as protective devices for primary sensing elements of all types.

A wide range of possible products are available. Conditions of pressure, temperature and corrosion resistance govern the size, shape and selection of materials to ensure optimum dependability system response and accuracy.



Standard Specification Overview

Stem Outdiameter

A wide variety of tube or pipe sizes in a variety of schedules subject to requirements and process conditions.

Material

A wide range of materials are available including 304, 316, 321 stainless steel, 446 Cr-Fe, Carbon Steel, Chromium Steels, Hastelloy C22, C276 and X, Incoloy 800, Inconel 600, Monel 600 and Titanium.

Instrument Connection

Female in NPT, PT, PF or other thread forms.

Process Connection

Connection to the pipe or vessel may be by means of flange. All sizes and pressure ratings are available to DIN, BS, ANSI/ASME and KS, JIS or other standards. Flanged connections are now the petrochemical standard for all applications.

Ordering Information for Thermowell

● = Standard Products ▲ = Available NA = Not Available

Model	Description			
WV	Vanstone Type (Made of whole round bar without any welding process)			
WS	Bar-stock Flange Type			
WF	End close tube Flange Type			
Code	Internal thread			
F	PF 1/2"			▲
T	PT 1/2"			▲
N	NPT 1/2"			●
X	Others			▲
Code	Standard Type			
A	ANSI / ASME			
K	KS / JIS			
D	DIN			
Code	Flange Size			
	ANSI / ASME	KS / JIS	DIN	
J	1"	25 A	DN 25	
R	1 1/2"	40 A	DN 40	
T	2"	50 A	DN 50	
V	2 1/2"	-	-	
W	3"	80 A	DN 80	
X	Others			
Code	Flange Rating			
	ANSI / ASME	KS / JIS	DIN	
2	Class 150	10 K	PN 10	
3	-	-	PN 16	
4	Class 300	20 K	PN 25	
5	Class 600	30 K	PN 40	
6	Class 900	40 K	-	
7	Class 1500	65 K	-	
8	Class 2500	-	-	
X	Others			
Code	Process Connection Style			
RF	RFSF (125~250 AARH)			▲
FF	FF			▲
RJ	RTJ			▲
X	Others			▲
Code	Flange Material			
4S	304 SS			▲
6S	316/316L SS			●
4L	304 L			▲
6F	A182F316			▲

4F	A182 F304	▲	▲	▲
MO	Monel	▲	▲	▲
HC	Hastelloy C-276	▲	▲	▲
IN	Inconel 600	▲	▲	▲
IC	Incoloy 800	▲	▲	▲
XX	Others	▲	▲	▲
Code	Well Material	WV	WS	WF
4S	304 SS	▲	▲	▲
6S	316/316L SS	●	●	●
4L	304L	▲	▲	▲
MO	Monel	▲	▲	▲
HC	Hastelloy C-276	▲	▲	▲
IN	Inconel 600	▲	▲	▲
IC	Incoloy 800	▲	▲	▲
XX	Others	▲	▲	▲
Code	"T" Lagging length (mm)	WV	WS	WF
45	45mm (STD)	●	●	●
50	50mm	▲	▲	▲
55	55mm	▲	▲	▲
75	75mm	▲	▲	▲
XX	Others	▲	▲	▲
Code	"U" Insertion Length (mm)	WV	WS	WF
0100	100mm	▲	▲	▲
0150	150mm	▲	▲	▲
0200	200mm	▲	▲	▲
0250	250mm	▲	▲	▲
0300	300mm	▲	▲	▲
ZZZZ	Others	▲	▲	▲
Code	Type	WV	WS	WF
T	Tapered	●	●	▲
S	Straight	▲	▲	●
P	Stepped	▲	▲	▲
Code	Bore diameter	WV	WS	WF
07	7mm	●	●	●
09	9mm	▲	▲	▲
10	10mm	▲	▲	▲
X	Others	▲	▲	▲
Code	Tip diameter	WV	WS	WF
14	14	▲	▲	▲
16	16	▲	▲	▲
17	17	▲	▲	▲
19	19	▲	▲	▲
XX	Others	▲	▲	▲

Code	Root diameter	WV	WS	WF
14	14	▲	▲	▲
16	16	▲	▲	▲
17	17	▲	▲	▲
19	19	▲	▲	▲
20	20	▲	▲	▲
21	21	▲	▲	▲
23	23	▲	▲	▲
25	25	▲	▲	▲
XS	Others	▲	▲	▲
Code	Option	WV	WC	WF
O	None	●	●	●
A	Chain & Plug (304 SS)	▲	▲	▲
B	Chain & Plug (316 SS)	▲	▲	▲
L	PTFE Lining	▲	▲	▲
P	PTFE Coating	▲	▲	▲
T	Tantalum Clad	▲	▲	▲
C	Stellite coating	▲	▲	▲
B	Buffing # 300	▲	▲	▲
H	Helium leak test	▲	▲	▲
D	Dye penetration test	▲	▲	▲
X	X-Ray Inspection	▲	▲	▲
P	hydrastatic pressure test	▲	▲	▲
M	Macro test	▲	▲	▲
FP	Full Penetration Welding	▲	▲	▲
BS	Both Side Welding	▲	▲	▲

Sample Model Selection : WSFJ15RFSSSS450250T0743

* The standard specification and price are subject to change without prior notice